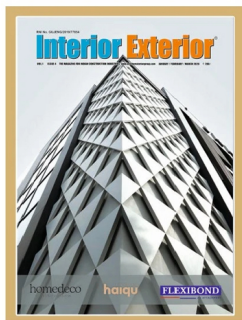


Features

14	SAOTA — Le Pine
22	Conarch Architects — JK House
28	Hiren Patel Architects — Avadh
38	Bridge Studio — Signature-2
44	Invent Architects — Villa Tides
56	SM Studio — Divya Bungalow
60	HV Associates — Mood Tinted Blue
64	Form Space N Design Architects — Bungalow at Lake City
70	Deepti Tangri & Associates — Luxury Residence
76	Anjali Rawat Architects — Adroit Office
80	Deep Breath Architecture Firm — Riverscape Penthouse
86	Allure Homez — Aesthetics & Comfort Design Combinations
90	Infinity Architects — An Inside Look of A Neo-classical Infinity Design



Advertiser's Index

AAC BLOCK SURYSHREE BLOCK	20
ALUMINIUM COMPOSITE PANEL UMIYA FLEXIBOND ALSTRONG	BACK PAGE 01
ALUMINIUM DOORS & WINDOWS & FACADE ART-N-GLASS STELLAR	36-37 54-55
BATHROOM ACCESSORIES DURAVIT	49
COMPOSITE PIPING SYSTEM KITEC	27
CONSTRUCTION CHEMICAL MARMO	51
ELECTRICAL ACCESSORIES COSMO ELECTRO INDUSTRIES	04
FALSE CEILING METALUM ARCH PRODUCTS	59
FOAM & FURNISHING TIRUPATI FOAM	85
LIGHTS SUNRISE LIGHT HOUSE	69
LOCKS / HARDWARE PLUS POINT BUILDWARE PVT LTD.	42-43
MARBLE BESTONE SKYZ STONES SHRI PARASNATH	100 & BACK INSIDE TITLE GET FOLD 75
MODULAR FURNITURE AFC CPM SYSTEMS ERGO SPACE	11 09 33
QUARTZ STONE HAIQU QUARTZ	02-03
RAILING S-GRIP	07
RUGS & CARPETS SARASWATI GLOBAL	13
SANITARYWARE NEXGEN	05
SOLAR PRODUCTS P&N ENGINEERING	97
SOLID SURFACE UMIYA FLEXIBOND	BACK PAGE
SWIMMING POOL DESJOYAUX POOL	63
UPVC DOORS & WINDOWS ENCRAFT INDIA LINGEL PROFINE INDIA WINDOW	21 06 08
WINDOWS BLINDS AWESOME DESIGNS	89
WINDOWS & FACADE MIXX WINDOWS	78-79

Riverscape Penthouse



Ar. AJAY PANCHAL

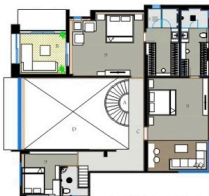


Deep Breath Architecture Firm
908, Icon Business Hub, Opp. Central Mall,
Piplod, Surat-395007, Gujarat
Ph.: 9825045687
E-mail : info@dbarchitecture.in
Website : www.dbarchitecture.in

The residence is such place where comfort comes first then the usage of the space. The penthouse of Mr. Gajendra bhai is Designed in surat, Gujarat aims to incorporate the luxury living with spacious and comfortable indoor areas. The residence interior planning is the combination of outdoor view and the indoor spaces. Therefore the interior space was designed accordingly.



LOWER FLOOR PLAN



UPPER FLOOR PLAN

LEGEND

- | | |
|----------------|-----------------|
| 1 - Entrance | 2 - Living room |
| 3 - TV lounge | 4 - Dining area |
| 5 - Puja room | 6 - Kitchen |
| 7 - Store room | 8 - Wash |
| 9 - Bed rooms | 10 - Toilet |

- A - Staircase
B - Deck
C - Walk Passage





Dining Area with Puja room

Every space of the house is opened up to the wide view of the river, thus the layout was defined by volumetric proportions and large openings towards the outside view. Along with that the double height living is designed accordingly that it blends with the outside view. A free standing staircase in the middle of the large central of the living and dining area is the element that adds a dynamism and contradiction to the effortless planning of the house. Similarly, at the upper floor each bedroom is connected to the common corridor which overlooks the lower floor living area. Every interior space has the wide deck which is designed with all natural material so that it can connect with outer view of the river, and that natural material gives the interior the sustainable and raw look. Addition to that the décor and furniture used in interior is astounding and modernist which again looks voluminous but by also giving enough wide large open spaces.

Hence, the outcome of the design reflection was quite sustainable by using all live materials like Acoustic Natural Stone, Wood, Italian Marble, etc. This had given Interior space the Luxurious and elegant gaze.

Product Details:

Flooring : Kajaria, Classic Italian (Silvasa)
 Wall cladding : Venner Point, Surat
 Timeless Treasure, Surat
 Ceiling : Saint Gobain Gypsum, Surat
 Furniture decor : Arancia, Surat ; HM Furniture, China
 Leela Furnishing, Surat; Artifacts, China



Master bedroom Wide deck opens up to the river view



Double height living with the helical staircase at the centre

Principal Details:

Principal Architect : Ajay panchal
 Client : Gajendrabhai Bhikadia
 Location : Surat, Gujarat
 Principal Designer : Ajay panchal
 Project Name : Riverscape Penthouse

Fact Box:

Build Area : 5000 Sq. ft
 Design Team : Deep Breath Architecture Team
 Year of Completion : 2019
 Project Cost : Rs. 4000 per Sq. ft
 Photography : 360 EYE



Master bedroom with wide deck opening